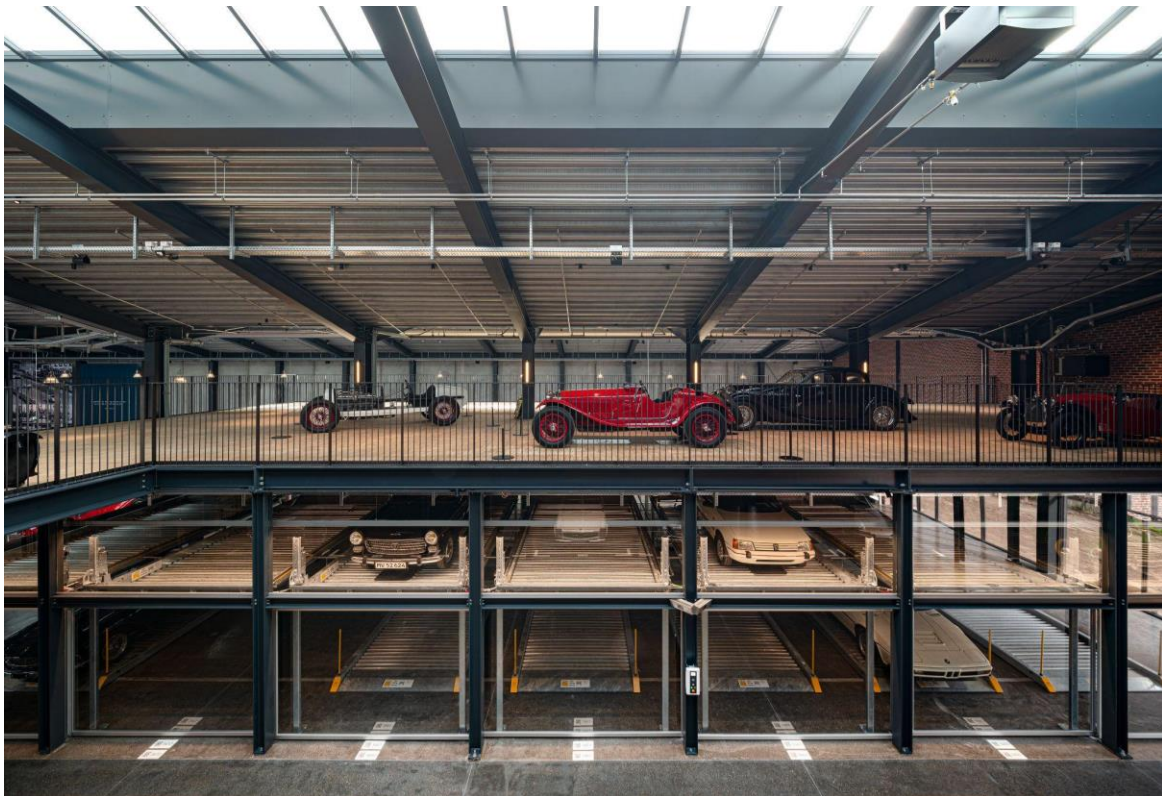


Innovative parking solutions for car museums in Hesse and Denmark

Parking fit for a museum: International car exhibitions rely on automatic high-tech parking systems from WÖHR



A complete experience for car collectors and enthusiasts from all over the world: the Classic Car House near Copenhagen.

© Jens Lindhe

Parking as an art form: since 2023, two internationally renowned museums of automotive history have relied on parking solutions from WÖHR Autoparksysteme GmbH. The National Car Museum The Loh Collection in Dietzhölztal-Ewersbach and the Classic Car House in Lyngby, Denmark, near the capital Copenhagen, present design icons, one-offs and collector's items - including legendary vehicles from prominent drivers such as Michael Schumacher and John F. Kennedy - on the digitally controlled platforms from WÖHR Autoparksysteme.

Dietzhölztal-Ewersbach and Copenhagen. Innovative parking systems are the future of mobility. The fact that they have already taken their place in automotive history is demonstrated by two car museums that opened last year and use innovative solutions from

the Swabian parking system developer WÖHR Autoparksysteme GmbH to present iconic vehicles to the public.

The Loh Collection, the national car museum in Dietzhöhlztal-Ewersbach, around 40 kilometres west of Marburg, exhibits icons, one-offs and historically significant vehicles from around 140 years of automotive history, while the Classic Car House in Lyngby near Copenhagen focuses on design development and also functions as a showroom and workshop for classic models and rare collector's items.

Schumacher's Ferraris and John F. Kennedy's Lincoln Continental at the National Motor Museum The Loh Collection

Anyone wanting to see legendary vehicles such as numerous Formula 1 cars owned by Michael Schumacher, including his first world champion Ferrari, John F. Kennedy's Lincoln Continental or the Maybach Exelero, a record-breaking car that was only built once, now has the opportunity to do so in Dietzhöhlztal-Ewersbach in Hesse. The Loh Collection, one of the world's most exciting car collections, was opened to the public there in July 2023. The exhibition features around 150 unique pieces, prototypes and icons of automotive history from 1886 to the present day - including the Bugatti Type 57 Atalante, the Lamborghini Miura SV and the Mercedes CLK GTR. Racing fans can expect a diverse range of well-known models from endurance, DTM and NASCAR races as well as Formula 1 and Formula E.

The interior façade of the museum is adorned with 22 of these unique exhibits. In order to display the valuable exhibits safely and visibly, those responsible decided in favour of two WÖHR Slimparker 557s: On three parking levels, the fully automatic parking systems each offer space for 11 vehicles up to 5.30 metres long, 2 metres high and 2.35 metres wide with a platform load capacity of 2,600 kilograms. Thanks to the special paint finish in pure white, this solution is not only practical and space-saving, but the WÖHR system itself becomes a designer piece.



Not only practical, but also a real eye-catcher: the two WÖHR Slimparker 557 impressively present 22 of the 150 or so collector's items on the interior façade. © WÖHR Autoparksysteme GmbH



From NASCAR to Formula 1: The Loh Collection National Car Museum also has plenty to offer racing fans. © WÖHR Autoparksysteme GmbH



Simple, safe, space-saving: the WÖHR Slimparker 557 accommodates vehicles up to 5.30 metres in length on three levels. © WÖHR Autoparksysteme GmbH

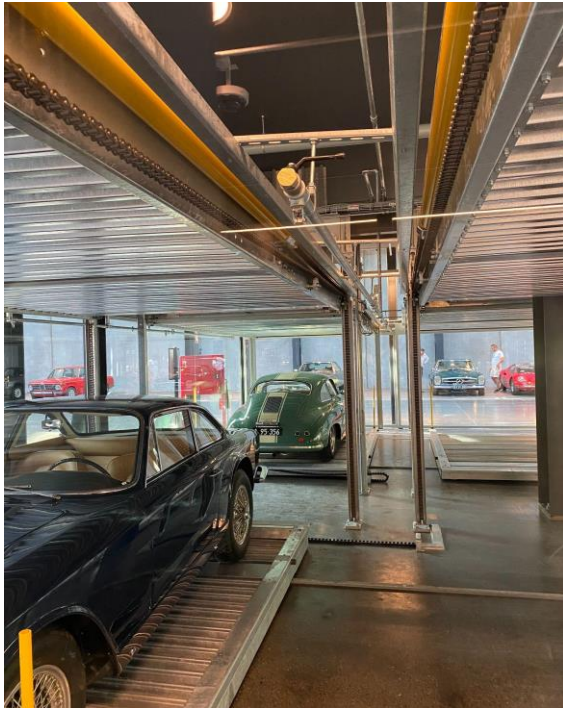
Museum, garage, workshop and hotel in one: the Classic Car House near Copenhagen

For car fans looking for a complete experience, a trip to our northernmost neighbour is well worthwhile. With its unique all-round concept, the Classic Car House near the Danish capital of Copenhagen attracts enthusiasts and collectors from all over the world: As a museum, it focuses on the cultural history of classic cars and design developments since the 1990s, while rare and valuable vehicles are professionally refurbished and restored in the in-house workshop on site.

In the associated car hotel, there are three WÖHR Combilift 552s with a total of 43 parking spaces, where guests can safely park their own collector's items with a height of up to 1.90 metres and a weight of up to 2,000 kilograms. Automatic sliding doors with aluminium frames and the WÖHR 505 turntable with a load capacity of up to three tonnes ensure smooth operation when parking and collecting the valuable cars. The special thing about it: through the glazed doors, visitors can see exactly how the rarities and classics parked here are moved and stowed as if by magic. A real eye-catcher for technology fans.



Exhibiting instead of parking: The show garage in the Classic Car House. © WÖHR Autoparksysteme GmbH



Modern parking solution for classic vehicles: The three units of the WÖHR Combilift 552 can accommodate a total of 43 collector's items. © WÖHR Autoparksysteme GmbH

Sustainable solutions for historic vehicles

The impressive combination of classic design and contemporary parking technology implemented in both museums demonstrates the variety of innovative parking systems that are also used in international flagship projects for sustainable mobility, such as the parking tower in Chapultepec Uno in Mexico City or the sustainable car park densification as part of a redevelopment project in Calle Montalbán in Madrid.

With its involvement in the national car museum The Loh Collection and the Classic Car House, the Swabian company has now entered automotive history in the truest sense of the word.

The WÖHR parking system in the "National Car Museum The Loh Collection" at a glance:

- 2x WÖHR Slimparker 557 tower
- 3 parking levels
- 22 parking spaces
- Vehicle length max. 5.30 m
- Vehicle height max. 2.00 m
- Vehicle width max. 2.35 m
- Pallet width 2.45 m
- Platform load max. 2,600 kg
- Special paint finish in RAL 9010 pure white

The WÖHR parking system in the "Classic Car House" at a glance:

- 3x WÖHR Combilift 552 & WÖHR Turntable 505
- One 9-space grid and two 7-space grids
- 43 storage spaces
- Vehicle height max. 1.90 m
- Vehicle weight max. 2,000 kg
- Platform width 2.50 m
- Automatic sliding doors with aluminium frame
- Swivel plate load max. 3,000 kg
- Platform diameter of turntable 4.40 m
- Aluminium sheet covering with underfloor drive

Über WÖHR Autoparksysteme GmbH

WÖHR Autoparksysteme GmbH is one of the leading international manufacturers of space-saving parking systems. We are experts in the development, manufacture and installation of intelligent and technologically advanced car and bicycle parking systems. Our projects with mechanical, semi-automatic and fully automatic parking systems are unique and can be found in the world's most beautiful metropolises, wherever space is at a premium and compact parking solutions are required. With the Bikesafe, our space-saving, fully automatic bicycle car park, we have been making a contemporary and sustainable contribution to bicycle-friendly mobility since 2015.

Press contact:

Marco Eisenack

textbau.media - Communication & Concepts //

MUNICH INNOVATION CREW GmbH

Elsenheimerstrasse 48

80687 Munich

M. +49 (0)170 1836506

Mail presse@textbau.media